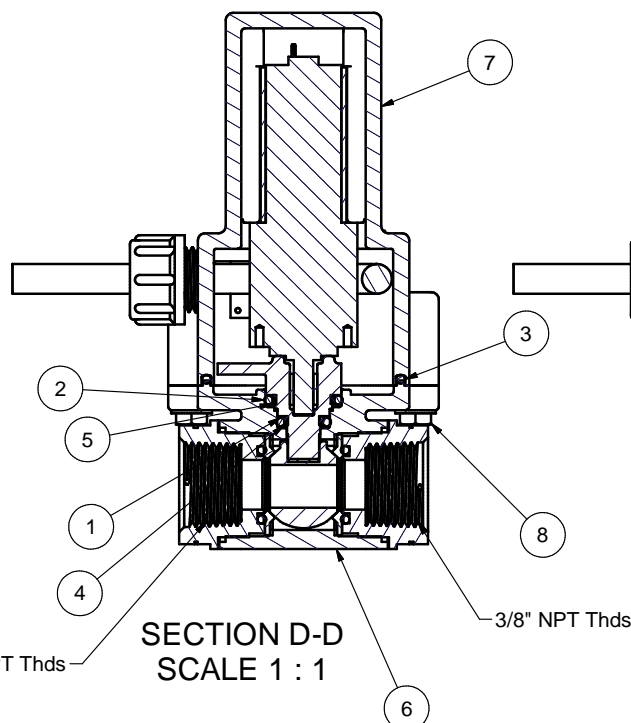
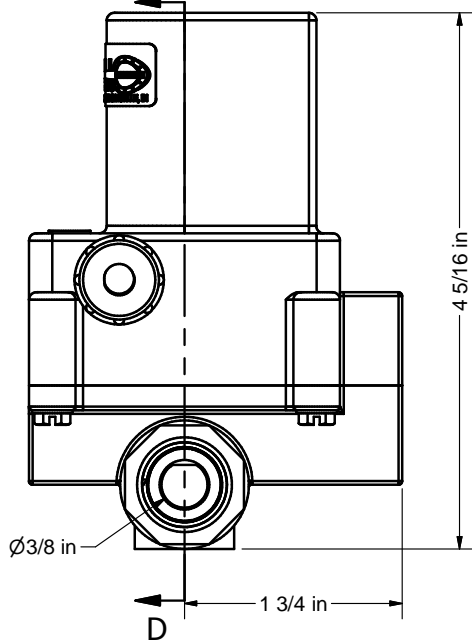
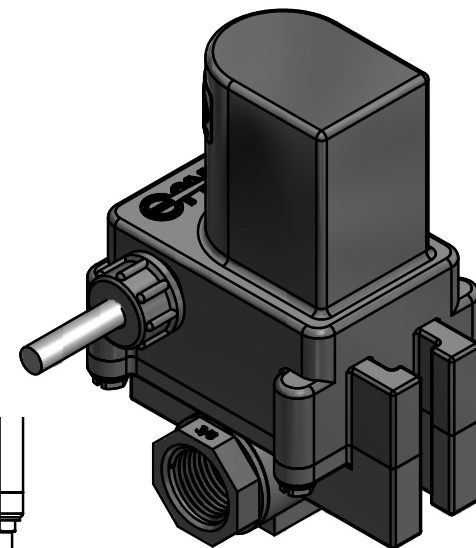
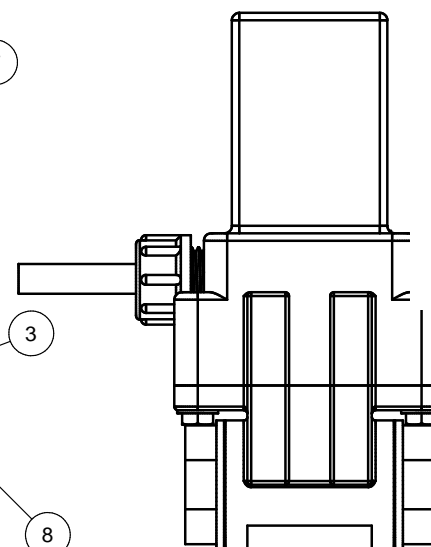


**Note:**  
Wiring, 3 Wire  
Red = +12 VDC  
Black = Ground  
White = Signal

		Parts List	
ITEM	QTY	PART NUMBER	DESCRIPTION
1	1	12717	#11 O'RING
2	1	12724	#14 O'RING
3	1	A035	2-035 O-ring, EPDM
4	1	AS586A010	TFE Rod Seal AS 586A - 010
5	1	AS586A013	TFE Rod Seal AS 586A - 013
6	1	LEV038X	3/8" LEV Valve Only
7	1	LEV3000	3 Wire LEV Actuator Assy
8	4	VE15220	#6x3/4"18-8SS HWH SMS
9	1	050DECAL	CAM LEVER COUPLING DECAL



**SECTION D-D  
SCALE 1 : 1**



THIS DRAWING AND ALL INFORMATION CONTAINED THEREON ARE THE EXCLUSIVE PROPERTY OF BANJO CORPORATION.

UNLESS SPECIFICALLY NOTED, THIS DRAWING AND ITEMS SHOWN ON THIS DRAWING ARE SUBJECT TO CHANGE AT ANY TIME.



**BANJO CORPORATION**  
150 BANJO DRIVE, CRAWFORDSVILLE, IN 47933  
WEB SITE: WWW.BANJOCORP.COM  
E-MAIL: SALES1@BANJOCORP.COM

DESCRIPTION  
3/8" Micro Electric Valve, 3 Wire 12VDC  
PART NUMBER  
LEV038