



Sauro Rossi®



MANUALE DI INSTALLAZIONE, USO E MANUTENZIONE
AVVOLGITUBI PER ALTA PRESSIONE



INSTALLATION, USE AND MAINTENANCE MANUAL
HOSE-REELS FOR HIGH PRESSURE



NOTICE D'INSTALLATION, UTILISATION ET ENTRETIEN
ENROULEURS DE TUYAU POUR HAUTE PRESSION



INSTALLATIONS-,BETRIEBS- UND WARTUNGSHANDBUCH
HOCHDRUCK-SCHLAUCHHASPEL



MANUAL DE INSTALACION, USO Y MANUTENCION
ENROLLADORES DE TUBOS PARA ALTA PRESION

Mod. MAGNUM GOLIA BABY "M" (REV. A)

Cod : 350.120.M - 350.080.M
350.050.M - 350.020.M

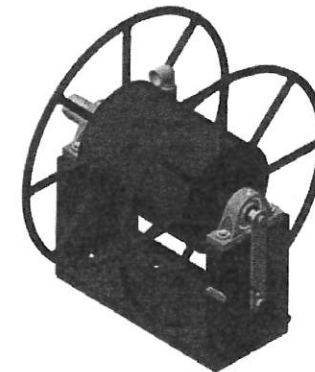


Sauro Rossi®

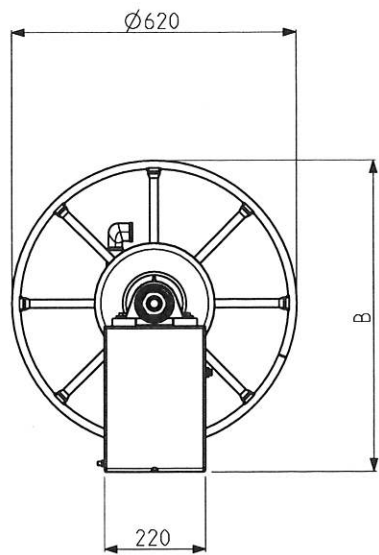
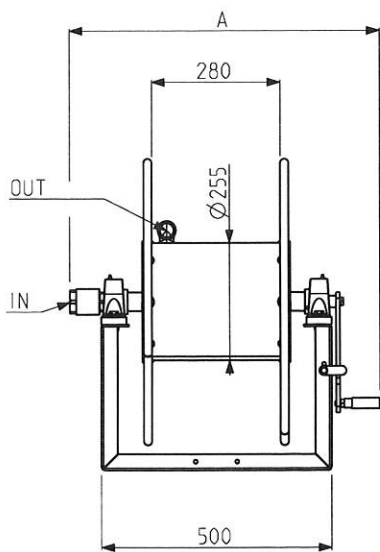
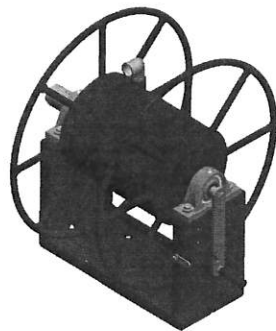
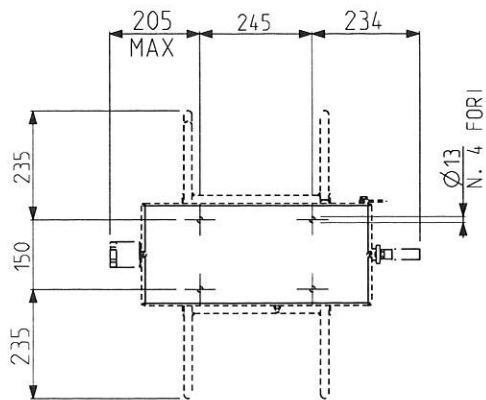
AVVOLGITUBI - HOSE-REELS

SAURO ROSSI srl - Via S. Bernardino, 56
42017 NOVELLARA (Reggio Emilia) - ITALY

Tel. +39 0522 668108 - Fax. +39 0522 668206
C.F. e P.IVA/V.A.T. IT01813510359 - R.E.A. RE226056 - R.I.RE 4591/1999
Info@saurorossi.it - www.saurorossi.it



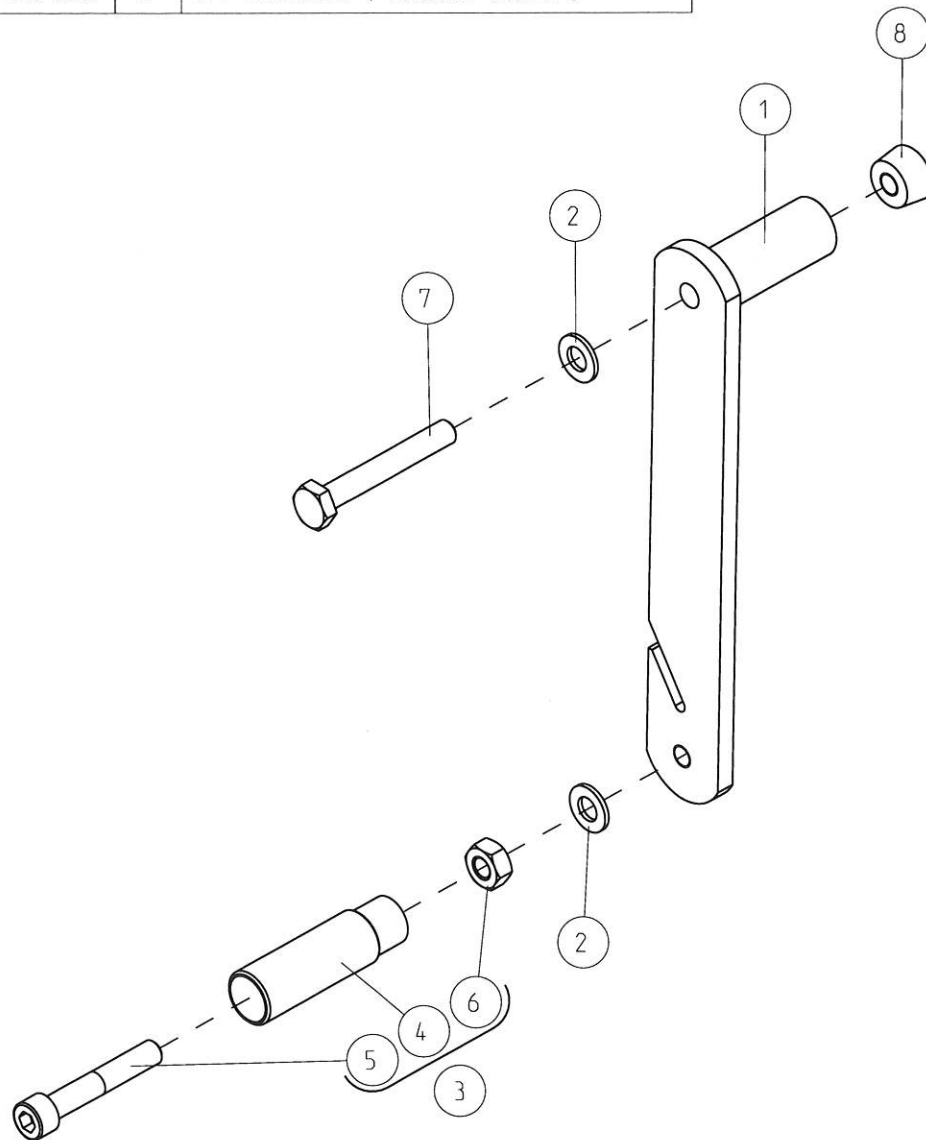
MAGNUM GOLIA BABY "M" REV. A



Nota: Le illustrazioni e i dati tecnici qui indicati si intendono a titolo indicativo e non sono vincolanti. Per ulteriori specifiche non esitate a contattarci
 Note: The pictures and technical data provided here are intended purely as an indication and are not binding. For further specifications feel free to contact us

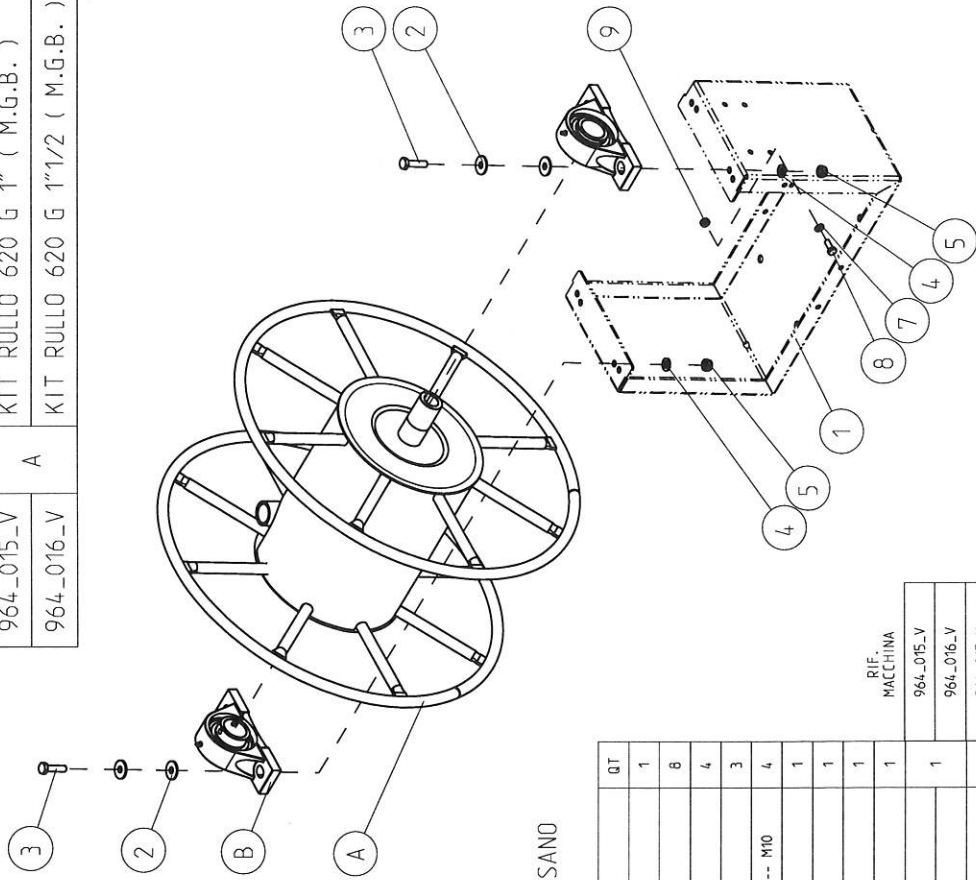
Codice Code	Lunghezza e diametro tubo consigliati Recommended nose length and diameter	Raccordi Connection		Pressione Pressure bar	Temperatura massima Maximum temperature °C	Dimensioni Dimensions (mm)		Peso Weight kg
		IN	OUT			A	B	
350.120.M	130 m - Ø 1/2	M 1/2	F 1/2	250	120	660	675	31
350.080.M	80 m - Ø 3/4	F 3/4	F 3/4	250	120	670	675	31
350.050.M	50 m - Ø 1"	F 1"	F 1"	250	120	675	675	31
350.020.M	20 m - Ø 1 1/2	F 1 1/2	F 1 1/2	200	120	685	690	36

CODICE	REV.	DENOMINAZIONE
944_013_Z	A	KIT MANIGLIA (MAGNUM GOLIA)



POS.	CODICE	REV.	DENOMINAZIONE	QT
1	1.44_00_44_01	B	MANIGLIA COMPLETA C/PERNO (MAGNUM GOLIA) *** ZINC.	1
2	ROND-0110	A	RONDELLA PIANA ZINC. (UNI 6592) --- Ø10	2
3	944_011_J	A	KIT IMPUGNATURA GIREVOLE Ø23 (HFP 80)	1
4	1.44_10_01	A	IMPUGNATURA GIREVOLE SENZA PERNO Ø23 (HFP 80)	1
5	VITE-031060	A	VITE TCEI ZINC. (8.8 - UNI 5931) --- M10 X 60	1
6	DADO-0310	A	DADO ES. MEDIO ZINC. (6S - UNI 5588) --- M10	1
7	VITE-021070	A	VITE TE ZINC. (8.8 - UNI 5739/5737) --- M10 X 70	1
8	1.44_90_09	A	CUNEO MANIGLIA (MAGNUM GOLIA)	1

CODICE		REV.	DENOMINAZIONE
964_015_V		A	KIT RULLO 620 G 1" (M.G.B.)
964_016_V			KIT RULLO 620 G 1"1/2 (M.G.B.)



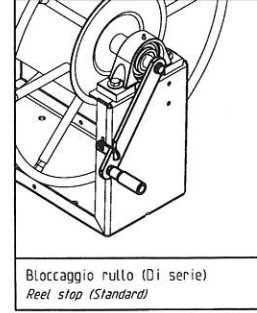
UNA RONDELLA (RIF. 6) DELLE QUATTRO CHE FISSANO I SUPPORTI DEVE ESSERE DENTELLATA (RIF. 8)

RIF.	CODICE	REV.	DENOMINAZIONE	QT
1	1_76_00_121_02	C	TELAIO (M.G.B.) *** RAL 3002	1
2	ROND-021030	A	RONDELLA PIANA FL ZINC. (UNI 6593) --- Ø10 X 30	8
3	VITE-021040	A	VITE TE ZINC. (8.8 - UNI 5739/5737) --- M10 X 40	4
4	ROND-0710	A	RONDELLA PIANA ZINC. (UNI 6592) --- Ø10	3
5	DADO-0910	A	DADO ES. AUTOBLOC. BASSI ZINC. (65 - UNI 7474) --- M10	4
6	ROND-0410	A	RONDELLA DENTELLATA ZINC. (DIN 6798A) --- M10	1
7	ROND-0408	A	RONDELLA DENTELLATA ZINC. (DIN 6798A) --- M8	1
8	VITE-020820	A	VITE TE ZINC. (8.8 - UNI 5739/5737) --- M8 X 20	1
9	DADO-0308	A	DADO ES. MEDIO ZINC. (65 - UNI 5588) --- M8	1
A	964_015_V	A	KIT RULLO 620 G 1" (M.G.B.)	1
	964_016_V	A	KIT RULLO 620 G 1"1/2 (M.G.B.)	1
B	SUPP-01208	A	SUPPORTO RITTO UCP-208 (Ø40)	2
	SUPP-01211	A	SUPPORTO RITTO UCP-211 (Ø55)	2

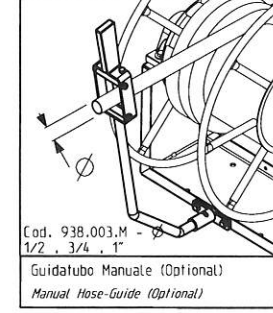
RIF. MACCHINA

964_015_V
964_016_V
964_015_V
964_016_V

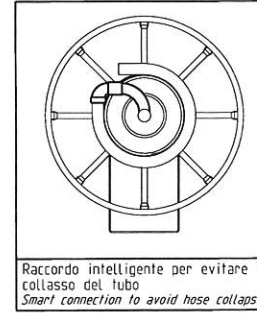
CARATTERISTICHE PRINCIPALI MAIN FEATURES



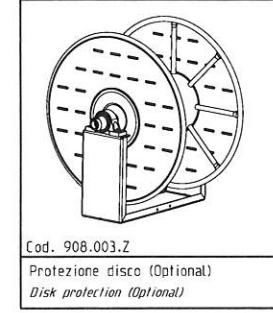
Bloccaggio rullo (Di serie)
Reel stop (Standard)



Cod. 938.003.M - Ø 1/2 - 3/4 - 1"
Guidatubo Manuale (Optional)
Manual Hose-Guide (Optional)



Raccordo intelligente per evitare il collasso del tubo
Smart connection to avoid hose collapse



Cod. 908.003.Z
Protezione disco (Optional)
Disk protection (Optional)

Capacità tubo (metri) - Diametro esterno (millimetri)
Hose capacity (metres) - Outside diameter (millimetres)

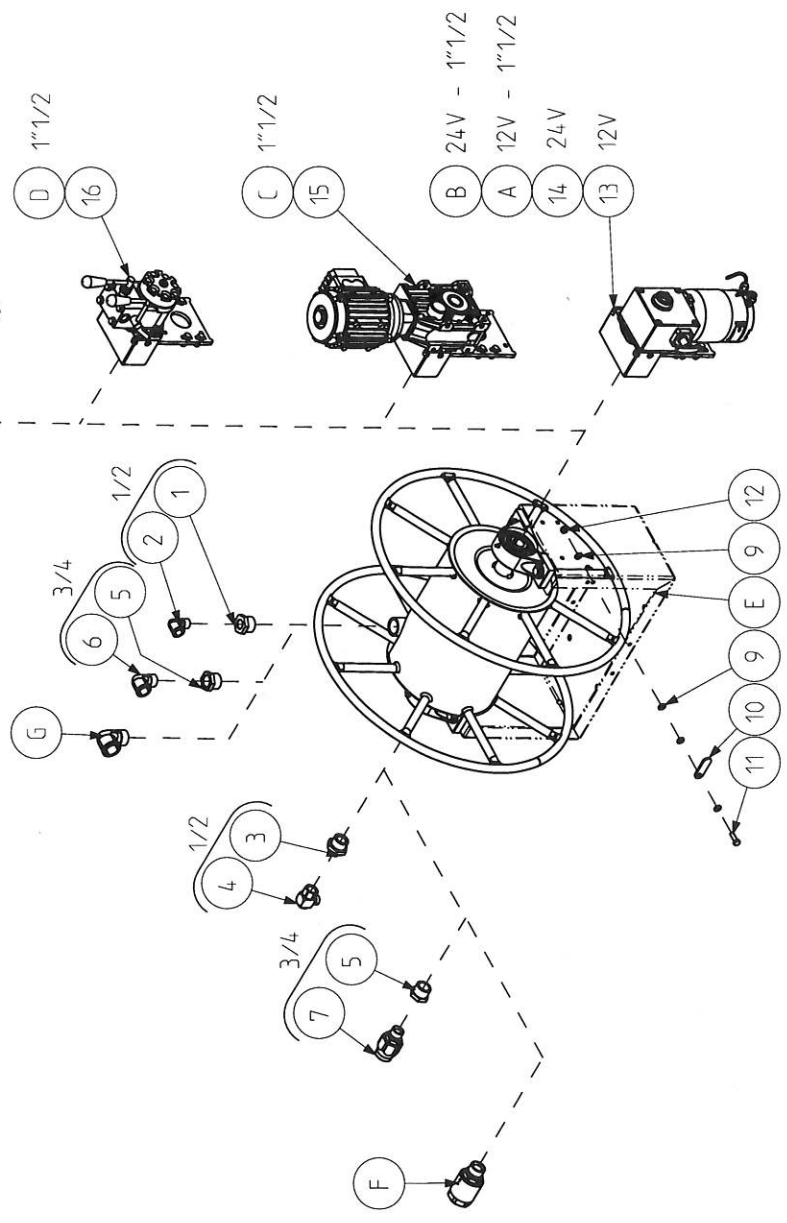
Hose	D.D.	350.120.M													350.050.M			
		17	18	19	20	21	22	23	24	25	26	27	28	29	30	31	32	33
m	m	214	205	172	172	138	130	100	104	104	96	80	80	74	74	58	53	53
Modello		350.080.M																

Capacità tubo (metri) - Diametro esterno (millimetri)
Hose capacity (metres) - Outside diameter (millimetres)

Hose	D.D.	350.050.M													350.020.M									
		34	35	36	37	38	39	40	41	42	43	44	45	46	47	48	49	50	51	52	53	54	55	
m	mm	53	53	48	36	36	36	36	32	32	32	32	32	22	20	20	20	20	20	20	20	20	20	
Modello		350.020.M																						

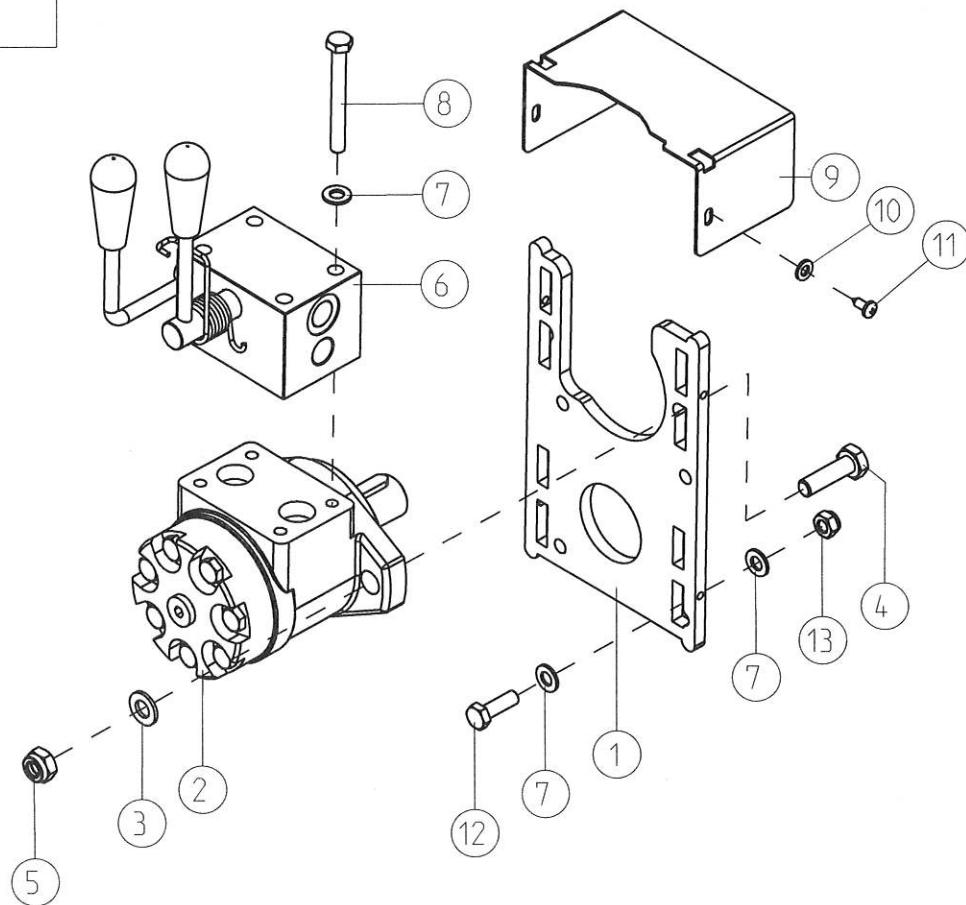
CODE / CODICE

MAGNUM GOLIA BABY	MAGNUM GOLIA BABY "E"		MAGNUM GOLIA BABY "0"	KIT RULLO MAGNUM GOLIA BABY	RACCORDI CONNECTIONS
	12 V	24 V			
350_120_M	380_120_E	382_120_E	384_120_0	964_015_V	1/2
350_080_M	380_080_E	382_080_E	380_080_0	964_015_V	3/4
350_050_M	380_050_E	382_050_E	380_050_0	964_015_V	1"
350_020_M	380_020_E	382_020_E	380_020_0	964_016_V	1" 1/2



POS.	CODICE	REV.	DENOMINAZIONE	QT
1	RID-07100012	A	RIDUZIONE GHISA ZINC. M/F BSPT/BSPP (FIG.241) --- 1" > 1/2	1
2	GOM-02012	A	GOMITO 90° GHISA ZINC. M/F (FIG.92) --- 1/2	1
3	NPL-02100012	A	NIPPOLO DI RIDUZIONE ACCIAIO ZINC. C/CONO 60° M/M BSPP --- 1" > 1/2	1
4	1.58_20_20	A	GIUNTO GIREVOLE A 90° IN OTTONE (250BAR NBR70; PTFE) M/F GAS 1/2	1
5	RID-07100034	A	RIDUZIONE GHISA ZINC. M/F BSPT/BSPP (FIG.241) --- 1" > 3/4	2
6	GOM-02034	A	GOMITO 90° GHISA ZINC. M/F (FIG.92) --- 3/4	1
7	2.58_20_05	A	GIUNTO GIREVOLE IN LINEA (300BAR NBR 70; PTFE) M/F GAS 3/4 ACCIAIO ZINC.	1
8	944_013_Z	A	KIT MANIGLIA (MAGNUM GOLIA)	1
9	ROND-01008	A	RONDELLA PIANA ZINC. (UNI 6592) --- 08	4
10	1.32_00_05_01	A	LEVETTA B/RULLO CORTA 08.5 *** ZINC.	1
11	VITE-020825	A	VITE TE ZINC. (8.8 - UNI 5739/5737) --- M8 X 25	1
12	DADO-0908	A	DADO ES. AUTOBLOC. BASSI ZINC. (65 - UNI 7474) --- M8	1
13	948_004-E	B	KIT MOTORIDUTTORE C/CARTER (12V 400W 30RPM)	1
14	948_005-E	B	KIT MOTORIDUTTORE C/CARTER (24V 400W 30RPM)	1
15	948_039-E	A	KIT MOTORIDUTTORE C/CARTER (KW 0.55 V230/400/50 2BRPM)	1
16	948_006-0	D	KIT MOTORE OLEODINAMICO C/CARTER (PK100CFRPC-1MM RAL9017)	1
A	948_001-E	B	KIT MOTORIDUTTORE (12V 400W 30RPM)	1
B	948_002-E	B	KIT MOTORIDUTTORE (24V 400W 30RPM)	1
C	948_038-E	A	KIT MOTORIDUTTORE (KW 0.55 V230/400/50 2BRPM)	1
D	948_007_0	D	KIT MOTORE OLEODINAMICO (PK100CFRPC-1MM RAL9017)	1
E	964_015_V	A	KIT RULLO 620 G 1" (M.G.B.)	1
	964_016_V	A	KIT RULLO 620 G 1 1/2" (M.G.B.)	1
F	2.58_20_08	B	GIUNTO GIREVOLE IN LINEA (200BAR NBR 70; PTFE) M/F GAS 1" ACCIAIO ZINC.	1
	2.58_20_06	A	GIUNTO GIREVOLE IN LINEA (2'00BAR NBR 70; PTFE) M/F GAS 1 1/2" ACCIAIO ZINC.	1
G	GOM-02100	A	GOMITO 90° GHISA ZINC. M/F (FIG.92) --- 1"	1
	GOM-02112	A	GOMITO 90° GHISA ZINC. M/F (FIG.92) --- 1 1/2"	1

CODICE	REV.	DENOMINAZIONE
948_006_0	D	KIT MOTORE OLEODINAMICO C/CARTER PK100CFRPC-1NM VERN



RIF.	CODICE	REV.	DENOMINAZIONE	QT	RIF.	CODICE	REV.	DENOMINAZIONE	QT
1	1_68_20_41_02	F	FLANGIA MOTORE "E/O" MR07/PK100 L.203xL.134xSP.8 FE360 VERN	1	8	VITE-020870	A	VITE TE ZINC 8.8 UNI5739/5737 M8xL.70	4
2	2_48_10_03	B	MOTORE OLEODINAMICO 100CC #025 RIF. PK100CFRPC-1NM RAL 9017	1	9	1_08_00_48_02	A	CARTER BIMOTORE "E" L.134.8xL.60xL.75xSP.1.5 FE360 VERN	1
3	ROND-0110	A	RONDELLA PIANA ZINC UNI6592 Ø10.5xØ20xSP.2 DN10	2	10	ROND-0106	A	RONDELLA PIANA ZINC UNI6592 Ø6.4xØ12xSP.1.6 DN6	2
4	VITE-021035	A	VITE TE ZINC 8.8 UNI5739/5737 M10xL.35	2	11	VITE-084813	A	VITE TCIC AUTOFILETTANTE ZINC UNI 6954 M4.8xL.13	2
5	DADO-0910	A	DADO ES. AUTOBLOC.NTE BASSO ZINC 6S UNI7474 M10	2	12	VITE-020825	A	VITE TE ZINC 8.8 UNI5739/5737 M8xL.25	4
6	948_037_D	B	KIT AZIONATORE C/OLEO-STOP INTEGRATO/BLOCCO LEVA PER MOTORE OLEODINAMICO	12	13	DADO-0908	A	DADO ES. AUTOBLOC.NTE BASSO ZINC 6S UNI7474 M8	4
7	ROND-0108	A	RONDELLA PIANA ZINC UNI6592 Ø8.4xØ16xSP.1.6 DN8	12					