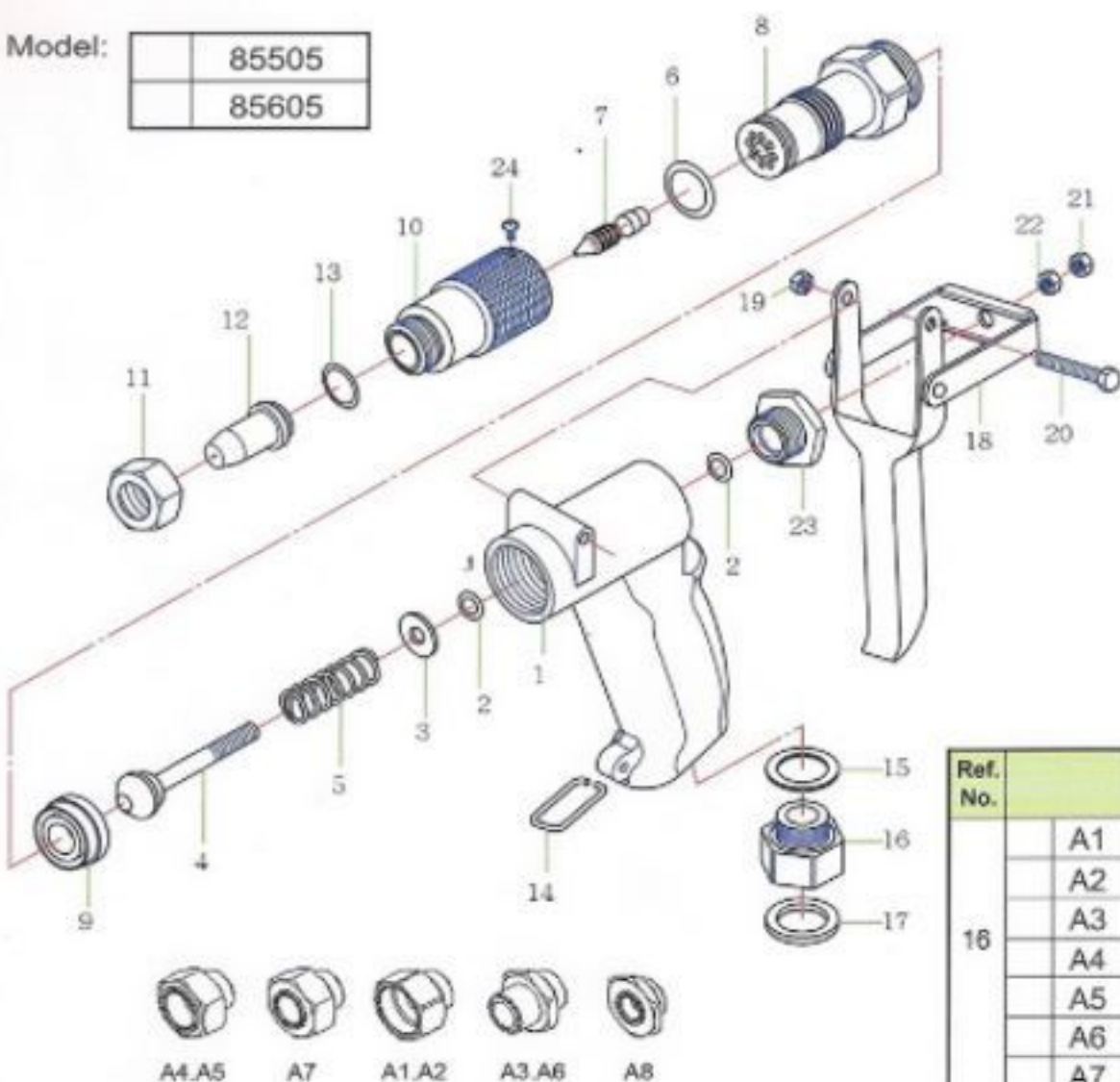


# HIGH PRESSURE SPRAY GUN

Model:

85505
85605



### Important:

When ordering parts, give PART NUMBER and PART DESCRIPTION. Reference Numbers are used only to point out parts in the drawing and are NOT to be used as ordering numbers.

Ref. No.	Adapter Specification	Spray Hose
16	A1	3/4" FMNH 13~16mm(1/2"~3/4)
	A2	3/4"FBSP 13~16mm(1/2"~3/4)
	A3	1/2"MBSP 10~13mm(1/2")
	A4	1/2"FBSP 10~13mm(1/2")
	A5	1/2"FG(PF) 10~13mm(1/2")
	A6	1/2"MG(PF) 10~13mm(1/2")
	A7	3/8"FG(PF) 10mm(3/8")
	A8	FSW13.8 7.5 & 8.5mm

Ref. No.	Part No.	Item Description
1	12-850-01	Grip
2	12-850-02	O-Ring ▲■●
3	12-850-03	Gasket
4	12-850-04	Stainless Steel Valve ●
5	12-850-05	Valve Spring
6	12-853-06	Gasket ▲■●
7	12-853-07	Whirler ●
8	12-853-08N	Adjustable Body
9	12-850-09	Teflon Valve Seat ■●
10	12-850-10	Adjuster Nut-Short
11	12-853-11	Cap
12	12-853-12S	Nozzle, 0.24-0.50 GPM (Option)
	12-853-12M	Nozzle, 0.50-1.80 GPM (Option)
	12-853-12(2.0)	Nozzle, 1.00-3.00 GPM (Standard)
	12-853-12L	Nozzle, 1.80-5.00 GPM (Option)
	12-853-12XL	Nozzle, 3.50-7.00 GPM (Option)
	12-853-122XL	Nozzle, 6.00-11.00 GPM (Option)
12-853-123XL	Nozzle, 8.00-13.50 GPM (Option)	
13	12-853-13	O-Ring ▲■●
14	12-850-14	Trigger Stopper Clip
15	12-850-15	Gasket 25x18x2.0
16	12-850-16	Adapter (Hose Coupler)
17	12-850-17	Gasket 27x18x2.0

Ref. No.	Part No.	Item Description
18	12-850-18	Stainless Steel Trigger
19	12-850-19N	Lock-Nut (M6 x 1.0)
20	12-850-20	Bolt (M6 x 1.0)
21	12-850-19	Nut (M6 x 1.0)
22	12-850-19	Nut (M6 x 1.0)
23	12-850-23	Gland
24	12-853-24	Barrel Set Screw

### Repair Kits

Part No.	Description
13-853-50	Repair Kit #1 Includes: (Ref #2) O-Ring, (Ref #13) O-Ring, (Ref #6) O-Ring ▲
13-853-60	Repair Kit #2 Includes: (Ref #2) O-Ring, (Ref #13) O-Ring, (Ref #6) O-Ring, (Ref #9) Teflon Valve Seat ■
13-853-75	Rebuild Kit Includes: (Ref #2) O-Ring, (Ref #13) O-Ring, (Ref #6) O-Ring, (Ref #9) Teflon Valve Seat, (Ref #7) Whirler, (Ref #4) Stainless Steel Valve ●