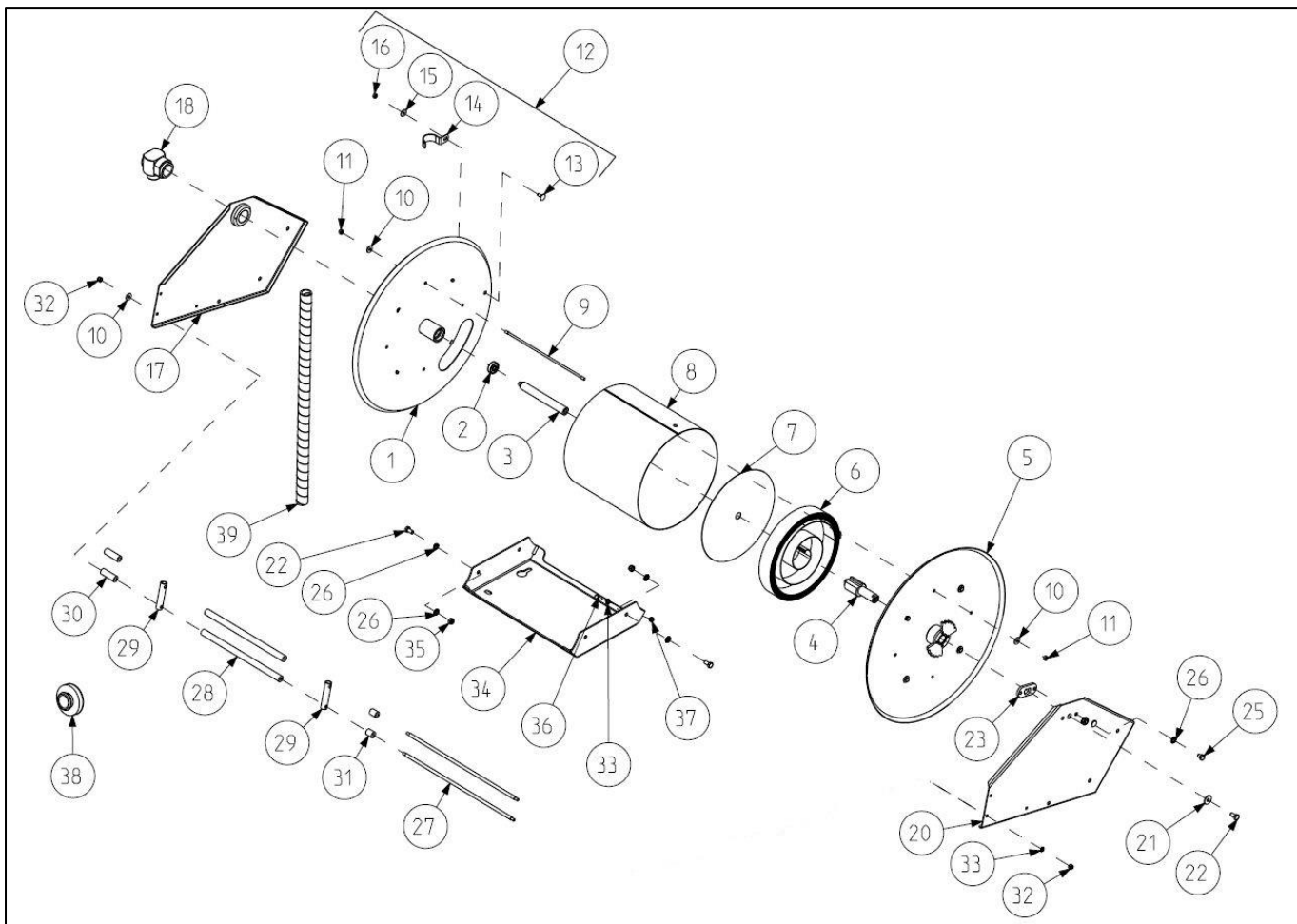
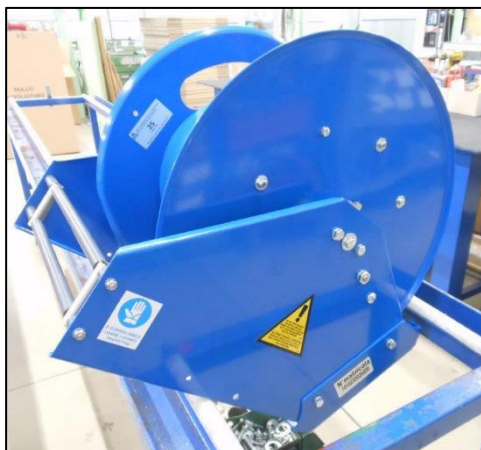


HOW TO REPLACE THE SPRING INSIDE 510.020.A

Codes: **510.020.A**, **510.020.A_002**, **510.020.X**, **510.020.XX**



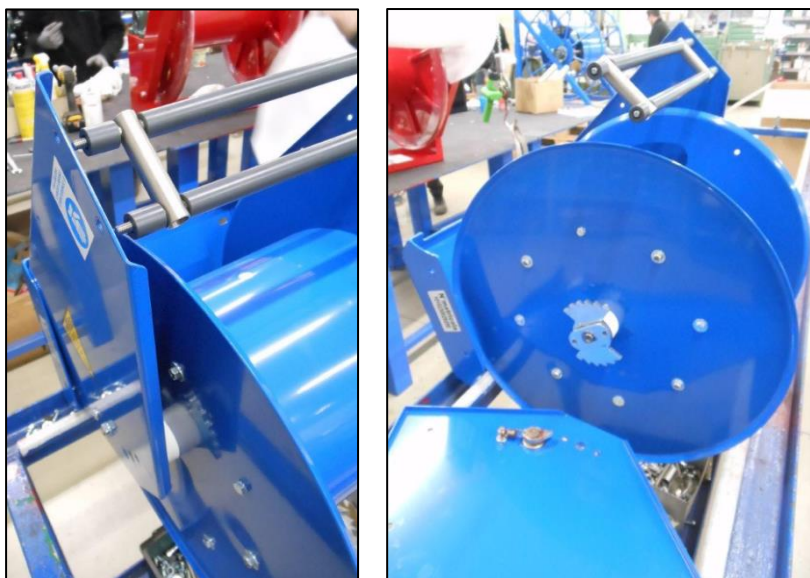
1. Disassemble the hose from the reel
2. Be sure that the spring is unloaded
3. Put the hose reel in neutral, by removing the 2 lateral screw placed on the right disk (opposite side of the swivel joint)



4. Remove all the screws of the right lateral side (opposite side of the swivel joint)



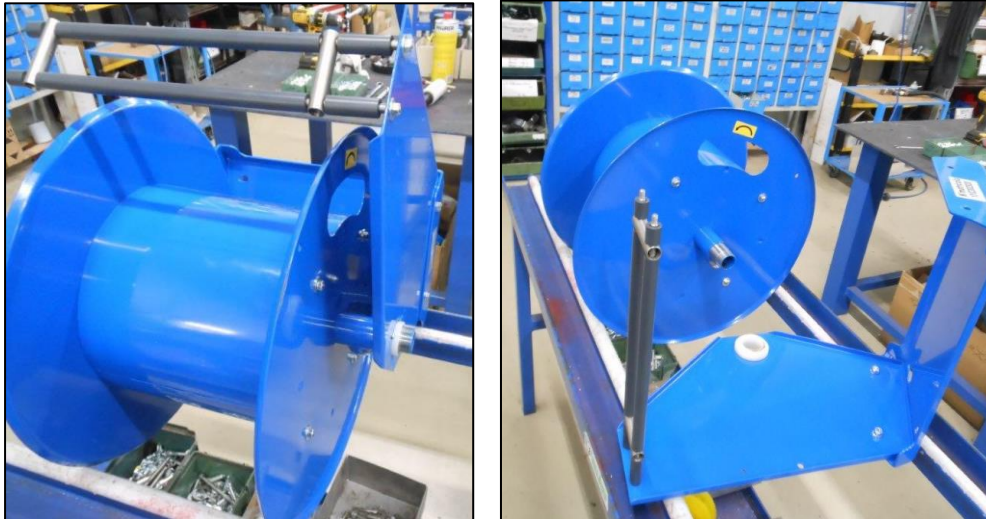
5. Remove the right lateral side (opposite side of the swivel) (no. 20 of the drawing)



6. Remove the hub stop from the hub (no. 23 of the drawing)



7. Remove the frame from the reel



8. Place the reel in a safe position, with the threaded shaft upward



9. Remove the 4 tie rods (no. 9 of the drawing), which keep the disks together



10. Remove the right disk (no. 5 of the drawing)



Please be careful! If the spring inside is broken, by removing the disk, this could suddenly jump out.



11. Remove the drum (no. 8 of the drawing)



12. Remove the tip (no. 3 of the drawing)



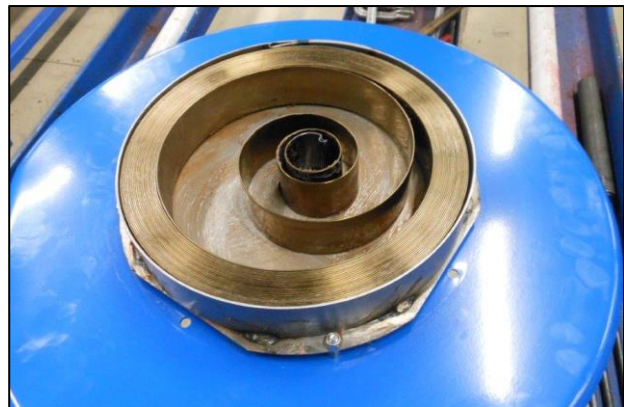
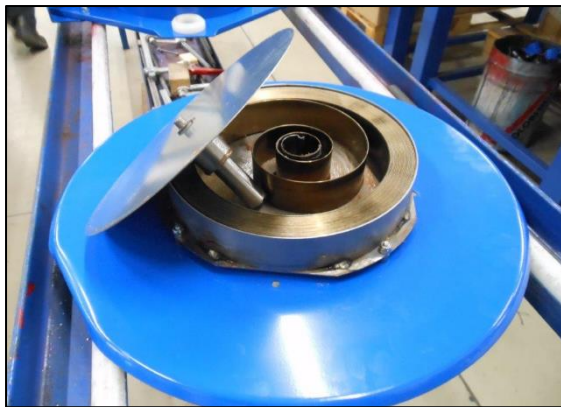
13. Break the Seeger placed on the spring cover



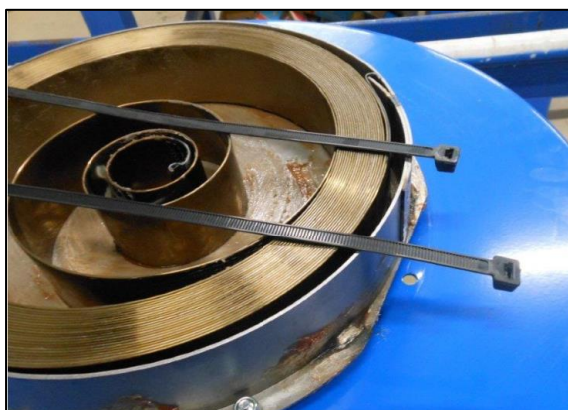
14. Remove the spring cover (no. 7 of the drawing) and the hub (no. 4 of the drawing)

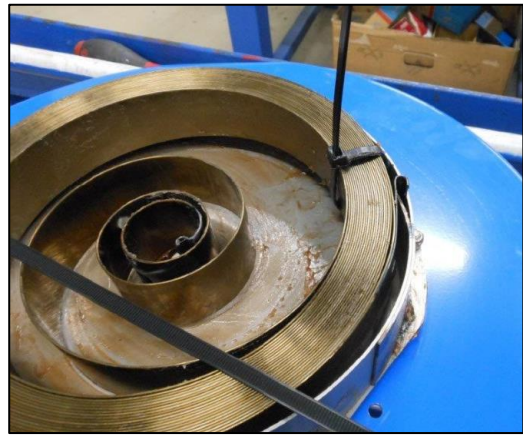


Please be careful when removing the hub! This could still be bounded to the spring inside the case.



15. Block the spring by using cable ties





16. Remove the Spring



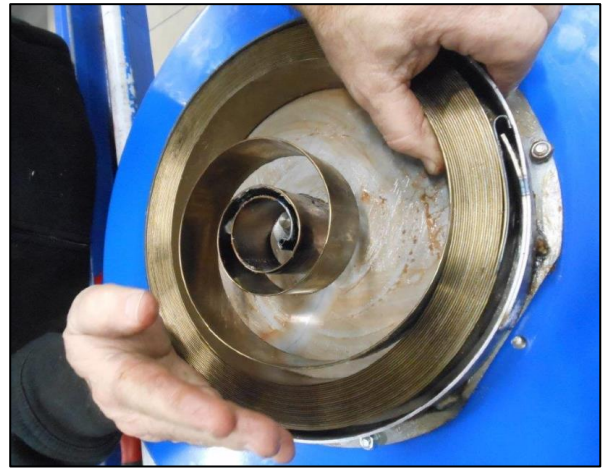
17. Remove the dirty and old grease present on the spring case. Re-grease the spring case



18. Re-mount the hub (no. 4)

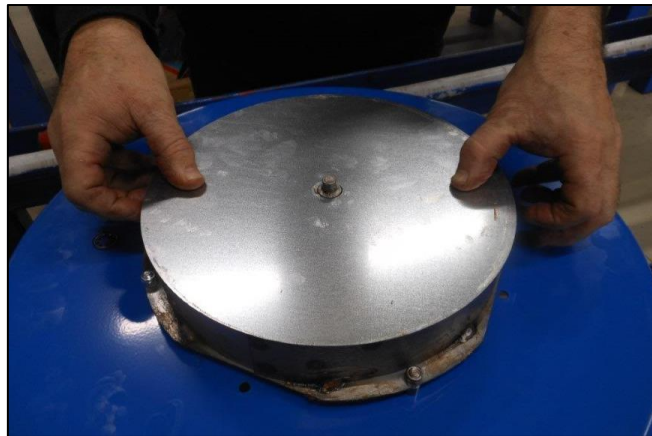


19. Insert the spring into the case, by fitting the external end of the spring to the hook of the case and the internal end of the spring to the hook of the hub





20. Re-mount the spring cover (no. 7)



21. Insert a new Seeger



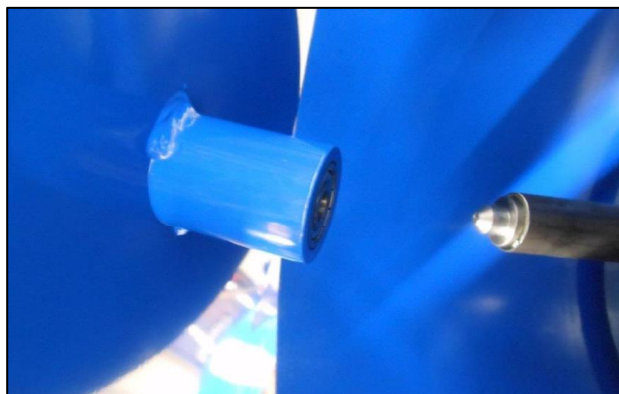
22. Re-mount the tip (no. 25)



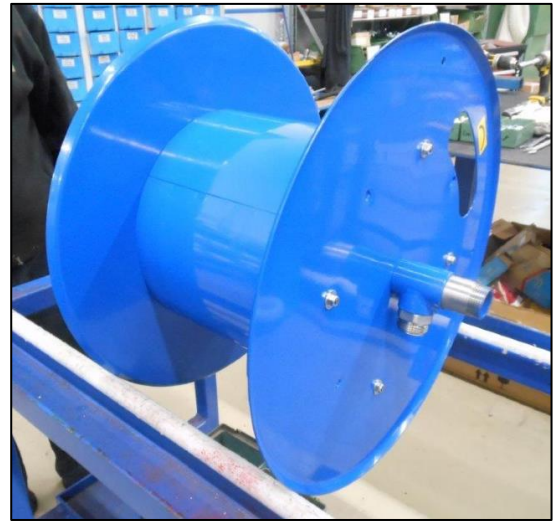
23. Re-mount the drum (no. 8), paying attention that the welding line does not coincide with the hole on the disc



24. Re-mount the disc (no. 5), centering the tip (no. 25)

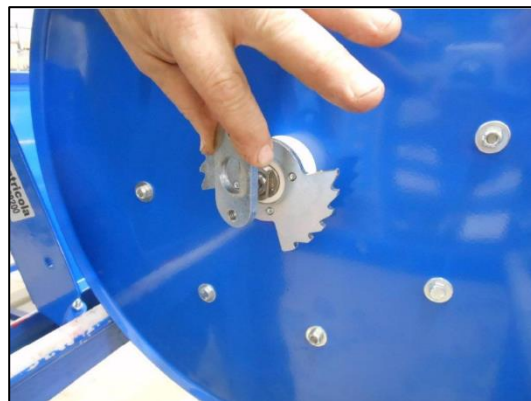


25. Re-mount the 4 tie rods (no. 9). Tighten the nut so that the tie rods come out by max. 1 mm

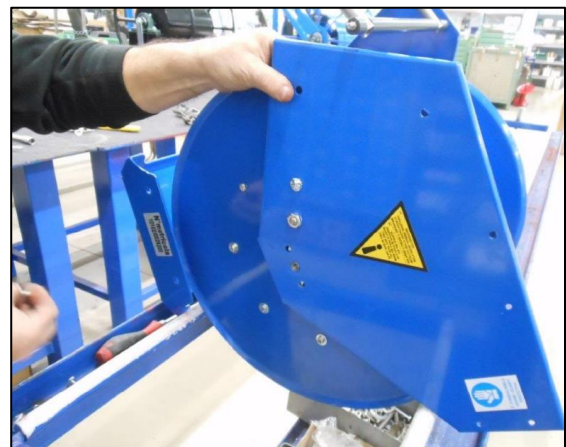
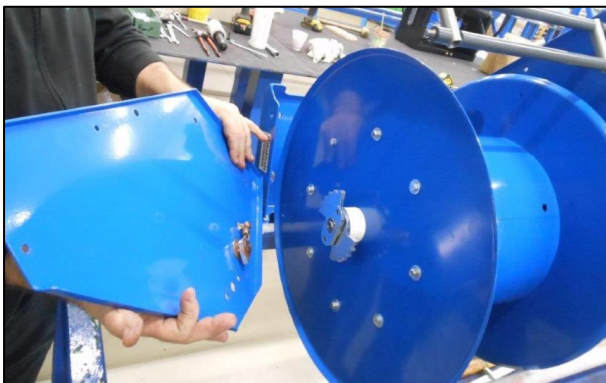


26. Put the reel back in horizontal position

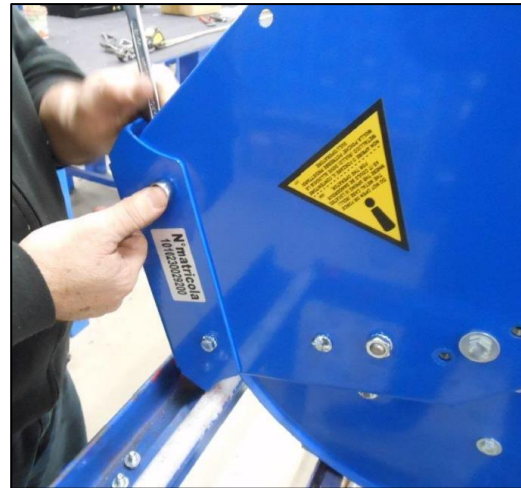
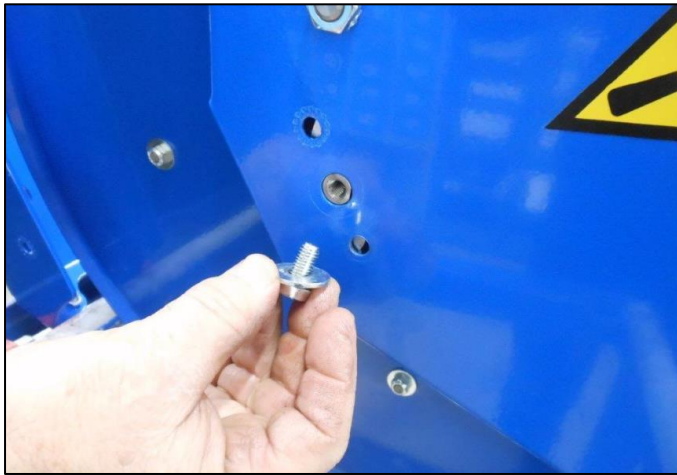
27. Re-mount the frame and the hub stop (no. 23)



28. Re-mount the right lateral side



29. Screw the Central Screw of the right lateral side (no. 22 of the drawing) and following, screw all the other screws of the side, previously removed (except the two lateral ones – pointed below)



30. Reassemble the hose

31. When the hose is recoiled, screw the two missing lateral screws of the right lateral side



32. Preload the spring before the use.